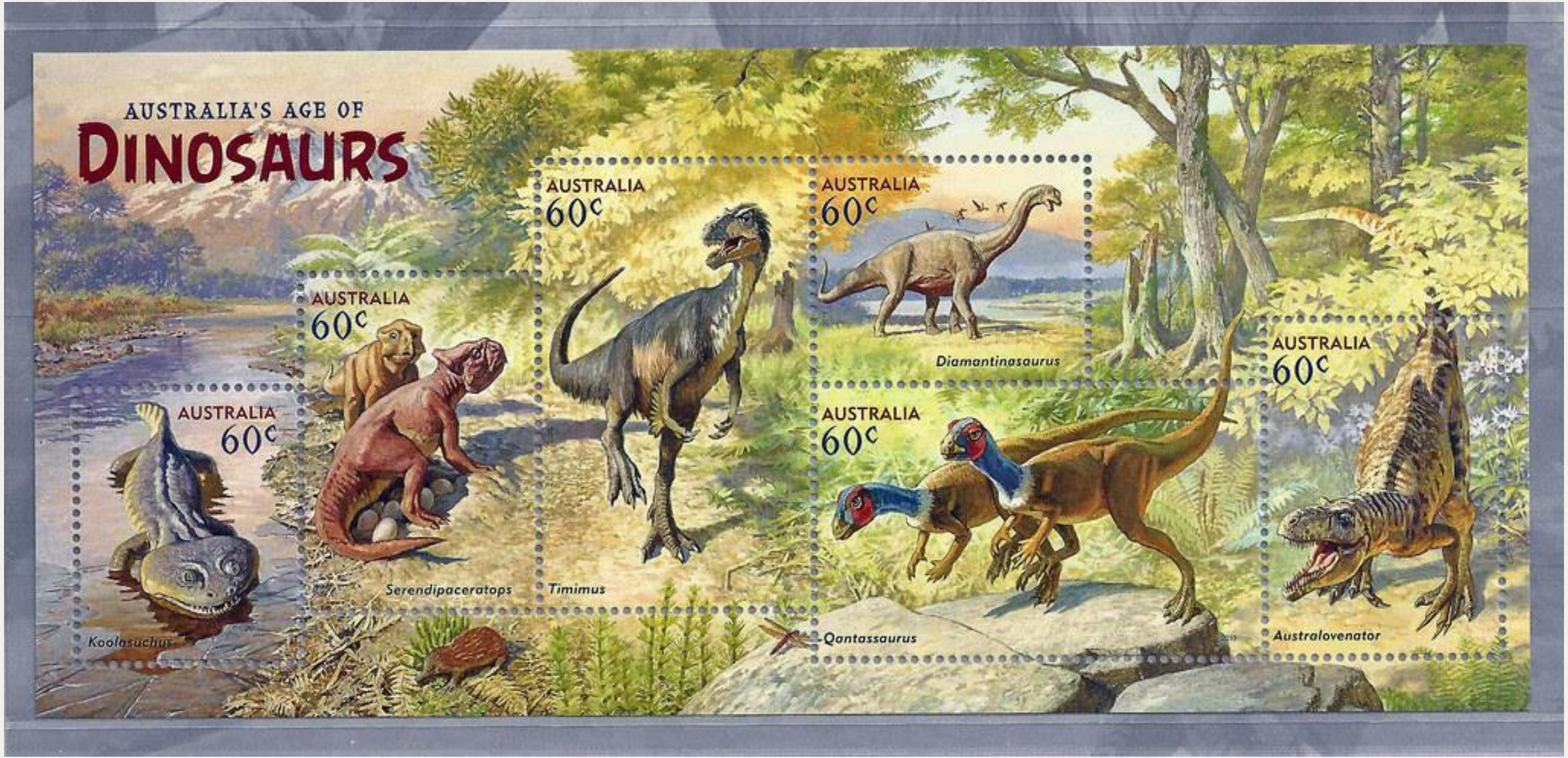


# DINO-PHILATELY: A NEW LOOK AT OUR OLD FRIENDS

Vikram Vakil, The University of Queensland



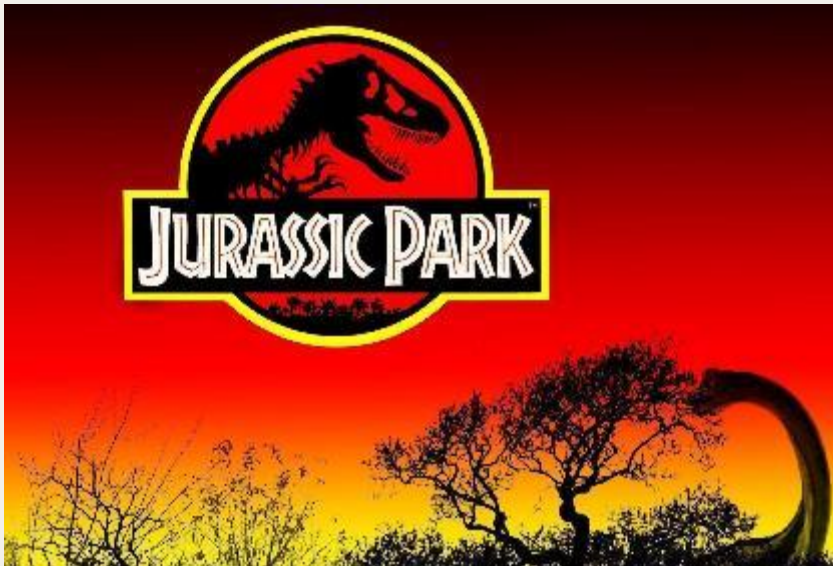
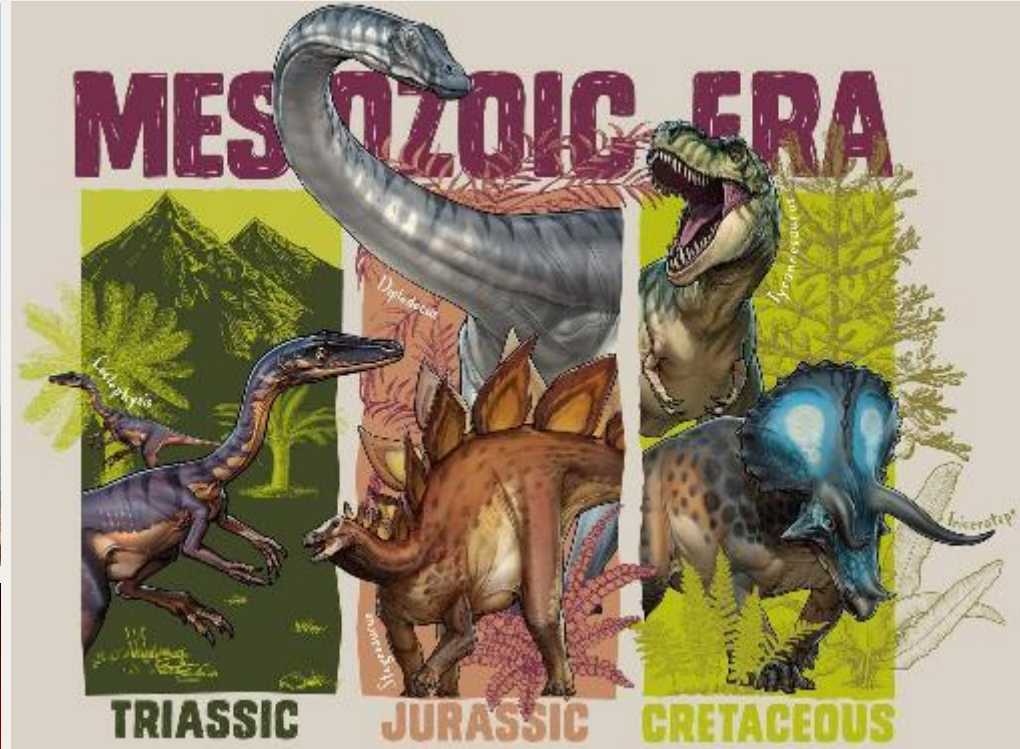
# WHAT IS PHILATELY?

- ◆ - Collection and study of postage stamps.
- ◆ - 1st postage stamp – May 6, 1840, Britain “**Penny Black**”.
- ◆ Profile of Queen Victoria’s head; remained on all British stamps for the next 60 years.

**Stamps lacked perforations until 1857.**

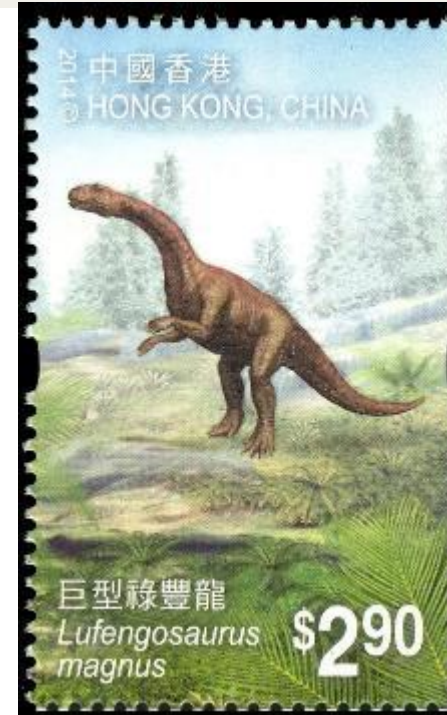


# DINOSAURS



# DINOSAUR STAMPS

- ◆ - Great Learning tool for all ages.
- ◆ - Dinosaur stamp collecting has become popular in last 25-30 years.
- ◆ - First dinosaur to be issued on stamp was *Lufengosaurus*, in 1958 by People's Republic of China; reissued by Hong Kong (2014).

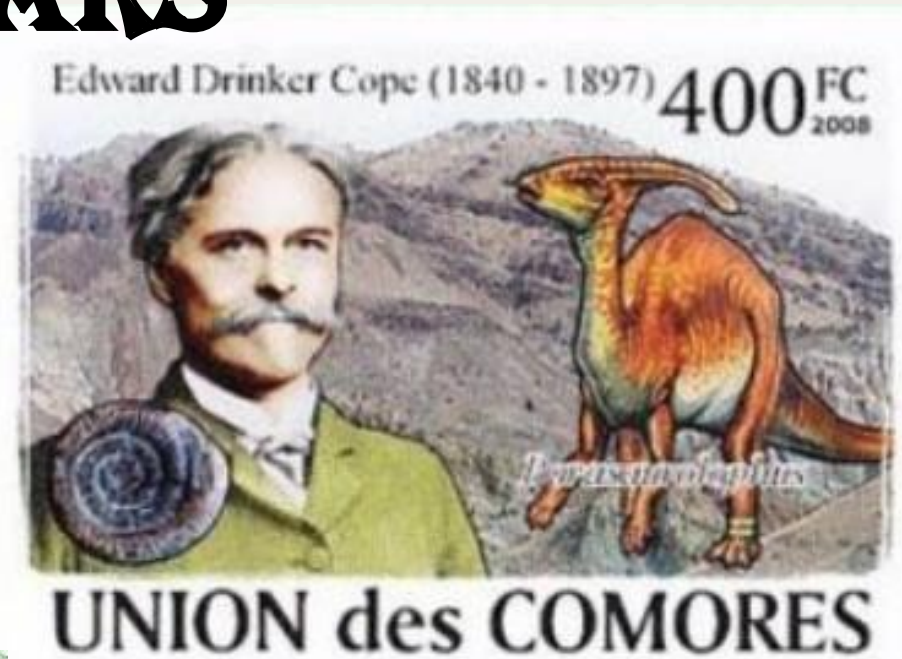


# OWEN'S DINOSAURIA



# THE BONE WARS

- Between Edward Drinker Cope & Othniel Charles Marsh.
- From 1877 to 1892.
- Important dinosaur contributions to science:



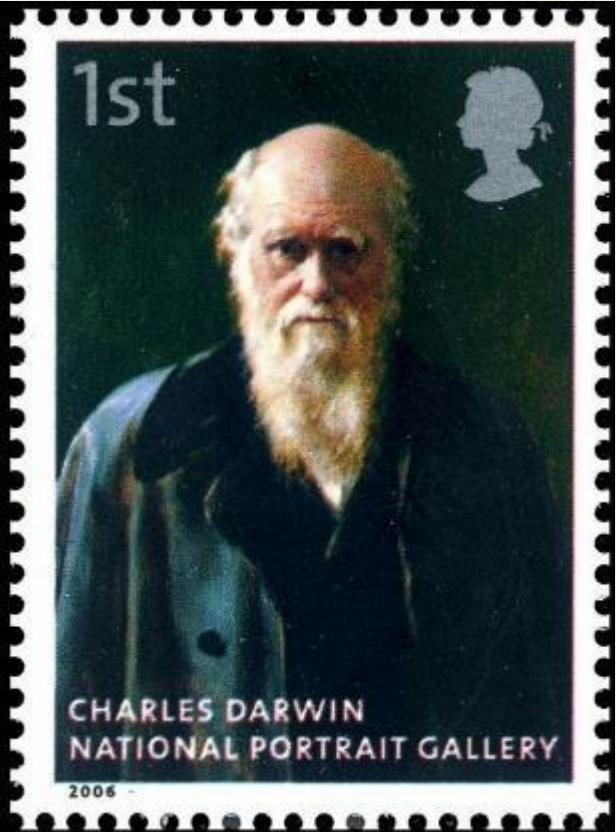
- Attempts to outcompete each other.
- **Bone Wars: A lesson to be learnt for posterity.**

# THE REAL LIFE “INDIANA JONES”

- ◆ Roy Chapman Andrews
- ◆ American explorer and naturalist.
- ◆ Central Asiatic Expeditions in 20<sup>th</sup> century.
- ◆ Noted for discovering dinosaur eggs:



# DARWIN, HUXLEY AND ARCHAEOPTERYX

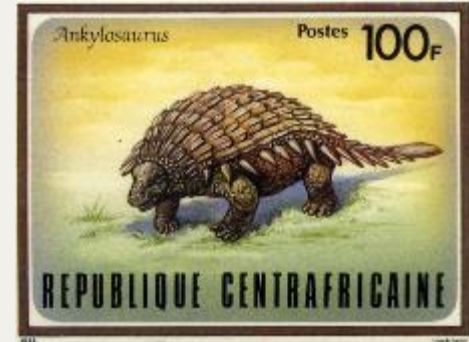
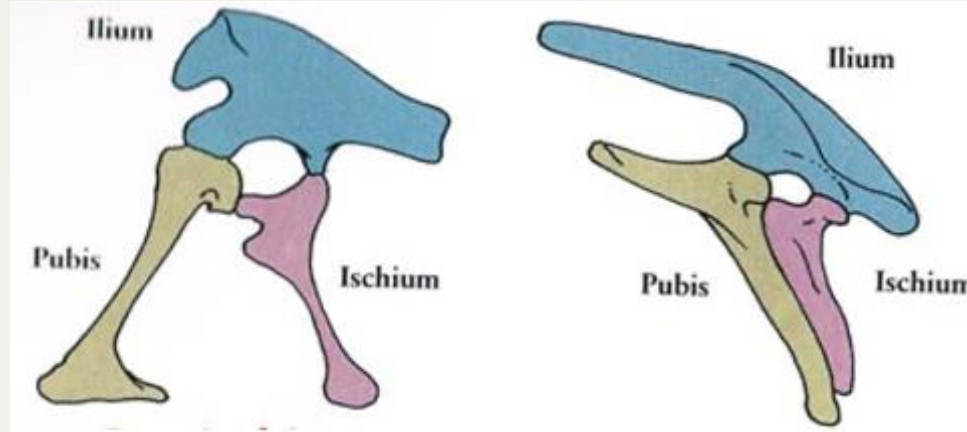




# DINOSAUR ORIGINS - *LAGOSUCHUS*



# HIP TO BE A DINOSAUR



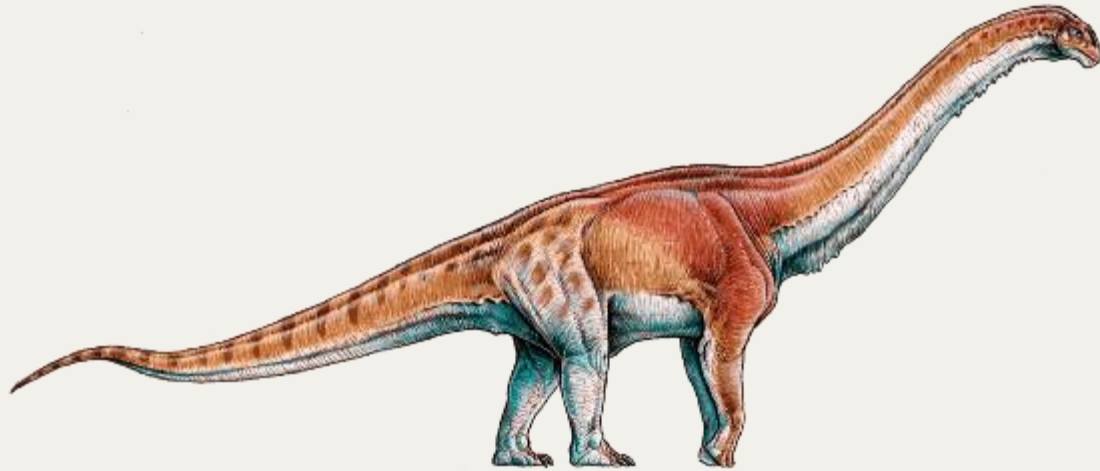
# T. REX ON STAMPS

- ◆ Most popular and widely studied dinosaur.
- ◆ Depicted in art, pop-culture, fiction and more...
- ◆ Fierce predator or lazy scavenger?
- ◆ “Bone-crusher”
- ◆ Feathered juveniles
- ◆ Stamps issued by many countries.



# THE BIGGEST DINOSAURS

- ♦ Sauropods “long-necked” dinosaurs.
- ♦ *Patagotitan mayorum* – largest dinosaur but no stamp, yet.



- ♦ Stamps issued by many countries on other large sauropods like *Argentinosaurus*.



# THE SMALLEST DINOSAURS – *COMPSOGNATHUS*



# ORNAMENTED DINOSAURS

- Many stegosaurs and ankylosaurs.

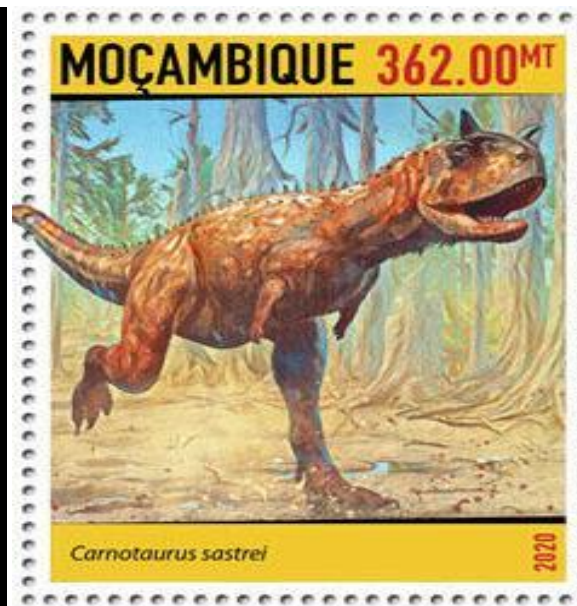
- Many horned/frilled dinosaurs

- Many duck-billed dinosaurs

- Purpose of ornamentation?

Visual cues? Display structures? Defence?

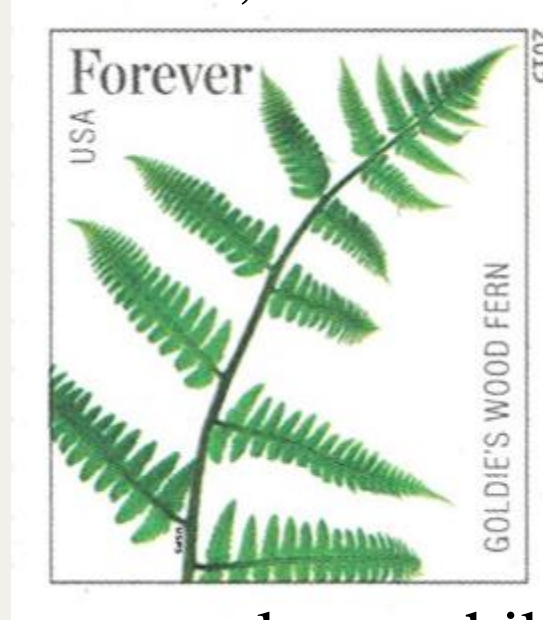




# BIZARRE DINOSAURS

# WHAT DID THEY EAT?

- **Herbivores** - ferns, cycads, horsetails, clubmosses



- **Carnivores** - other dinosaurs, mammals, amphibians and reptiles



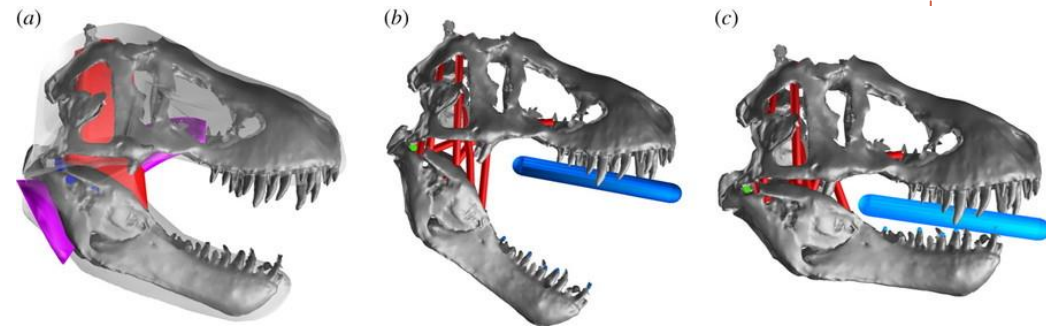
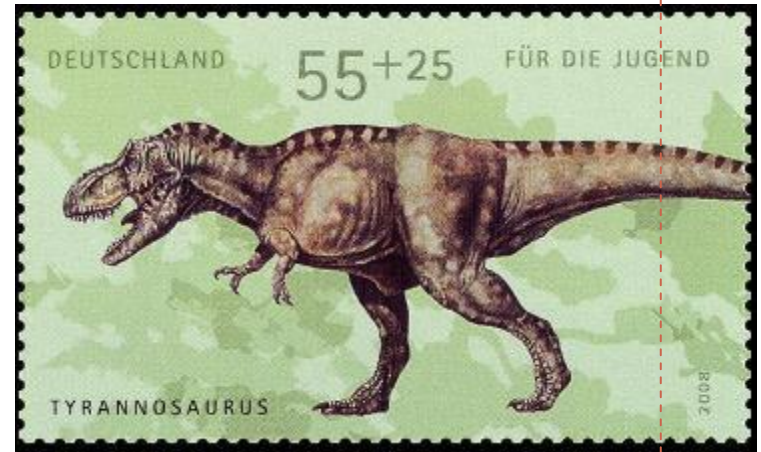




VS

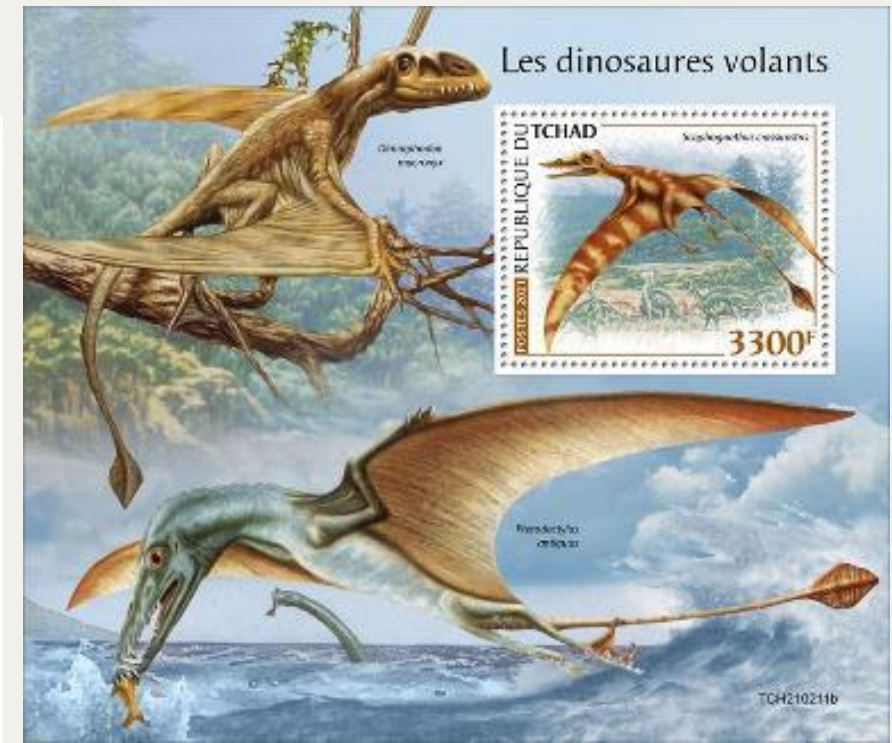
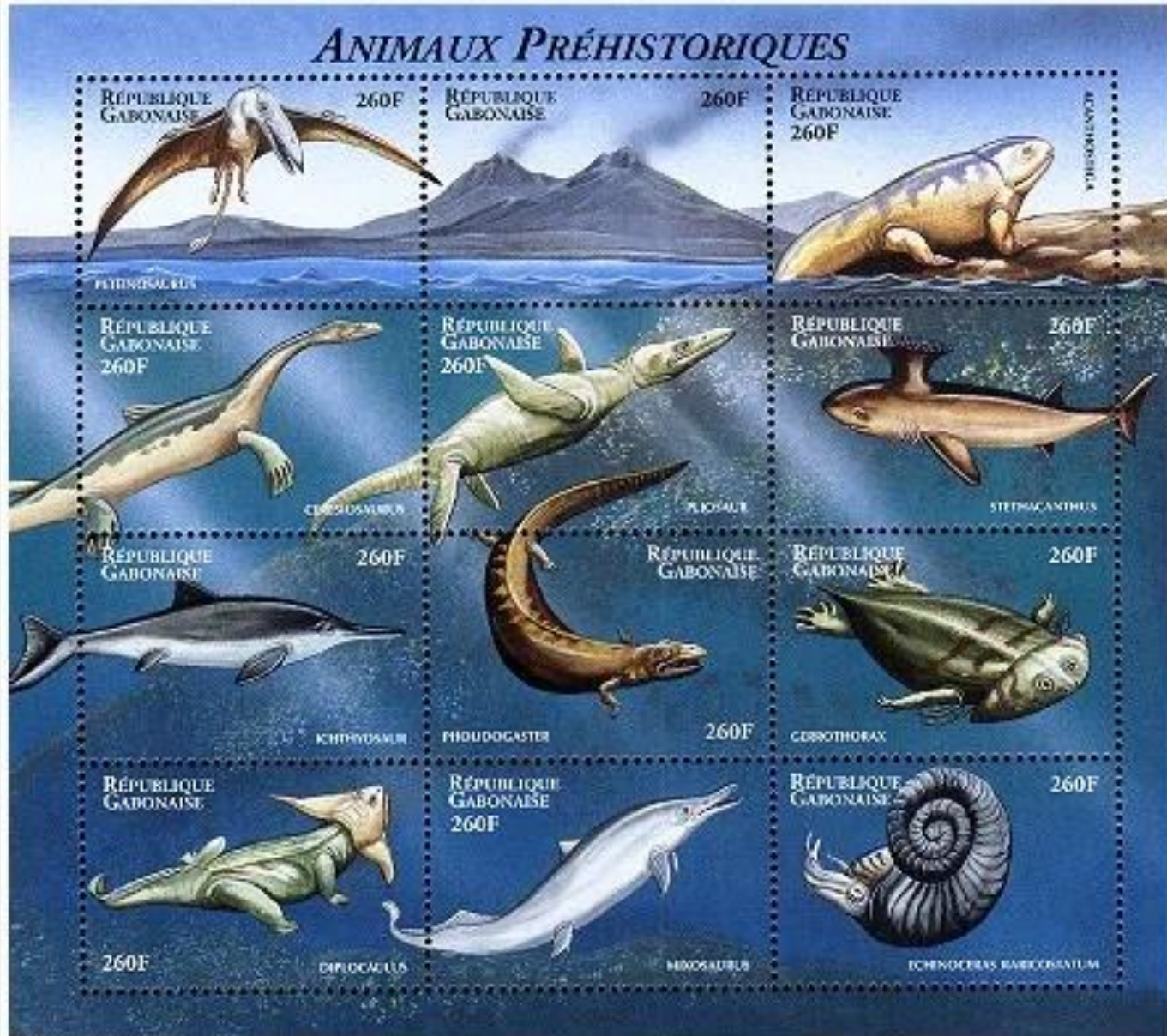


VS



# WHO'S THE DEADLIEST?

# DINO-PALS



# END OF A DYNASTY

- Not just dinosaurs!



- What caused their death?



# EXTRA INFO FROM STAMPS: STYLES OF PRESERVATION



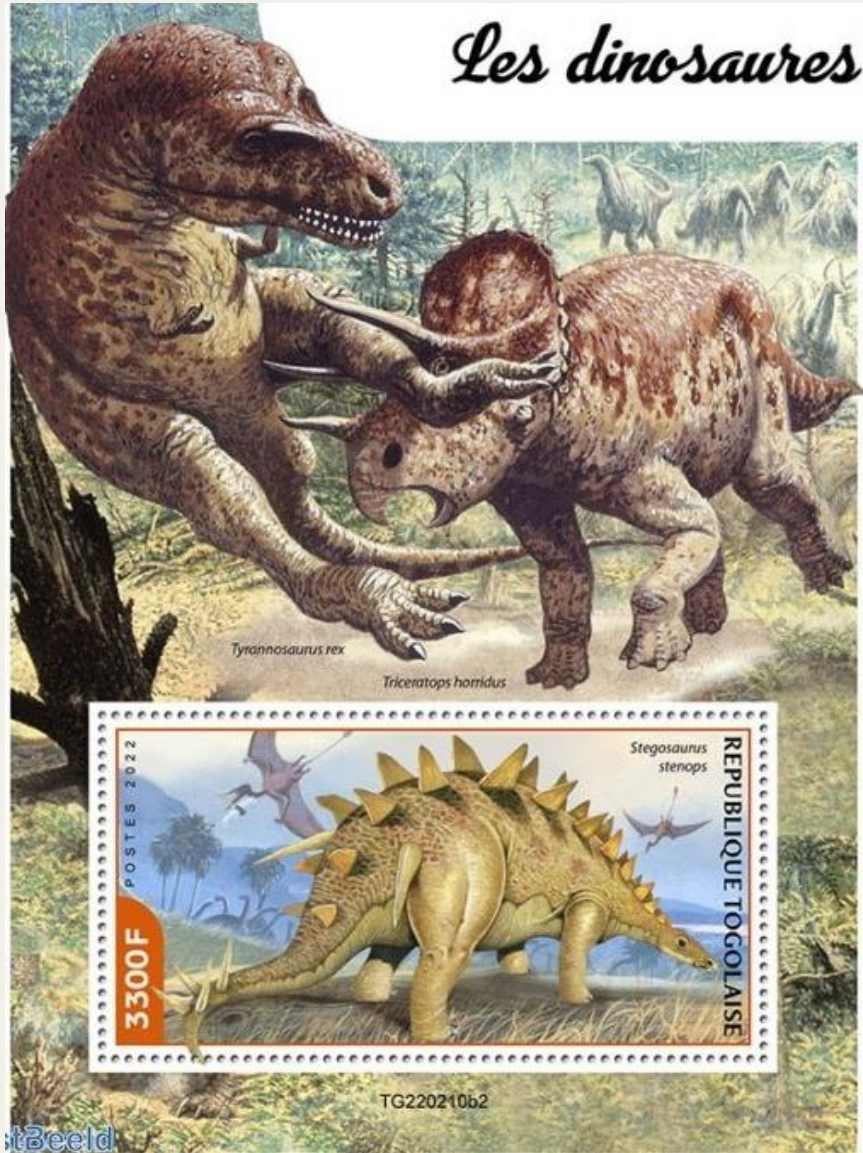
Hard parts – body fossils

Hard parts – opalized bone

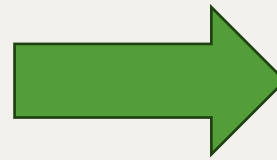
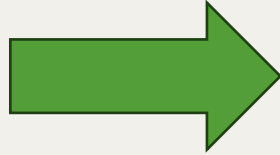


Ichno fossils – tracks/footprints

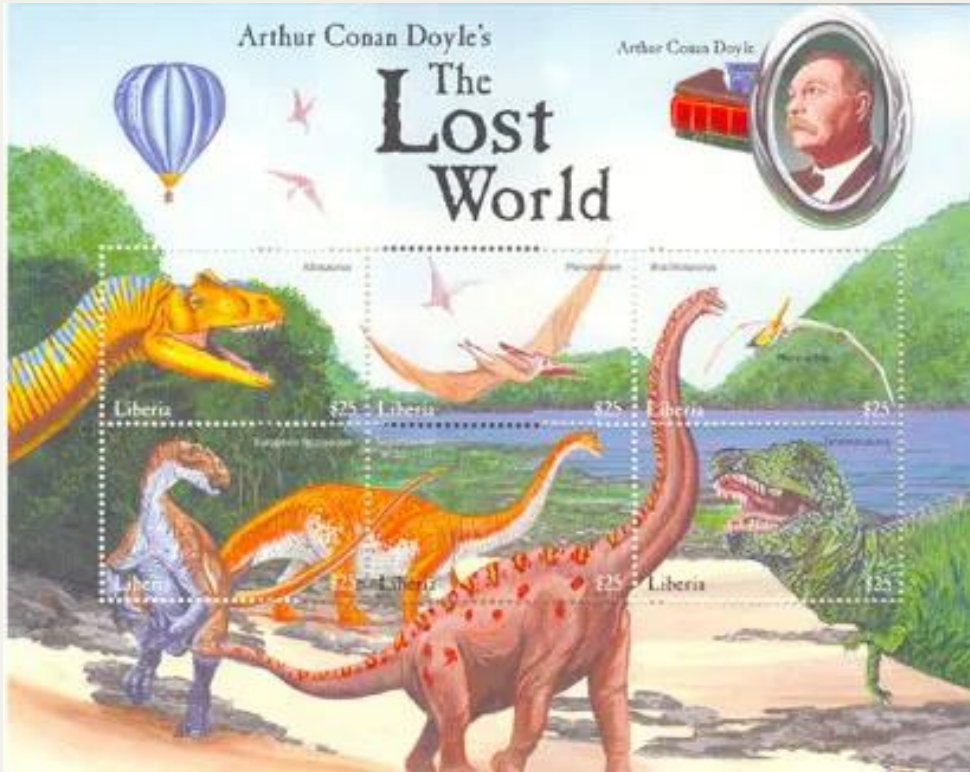
# EXTRA INFO FROM STAMPS: BIOLOGY



# UPDATED DINOSAUR STAMPS



# DINOSAURS IN CARTOONS AND POP CULTURE/FICTION



# INDIA HAS DINOSAURS BUT NO DINOSAUR STAMPS!

